



WELCOME TO RECEPTION

Witamy

வரவேற்பு

Benvenuti

Üdvözöljük

Willkommen

Bi xêr hatî

خوش آمدی

Hoşgeldiniz

أهلاً بك

Bine ati venit

欢迎

Bem-vinda

I mirëpritur

歡迎

Bienvenidos

Vitajte

Chào mừng

Velkommen

Bienvenue

καλώς ΗΡΘΑΤΕ

स्वागत हे

Soo dhawow

Welcome

어서 오십시오

Tubasanyukidde



The School Day



Arriving at School

When you get to school in the morning, you and your adult will go through the school gate and down the slope to the Foundation Stage gate. You will wait here until the teachers open the gate and your adult will take you through to the Apple Tree Garden. Then it is time to say 'goodbye' to your adult, 'hello' to your teacher and go into the classroom with your friends.

Reception Classroom



Reception Classroom



Reception – My School Morning

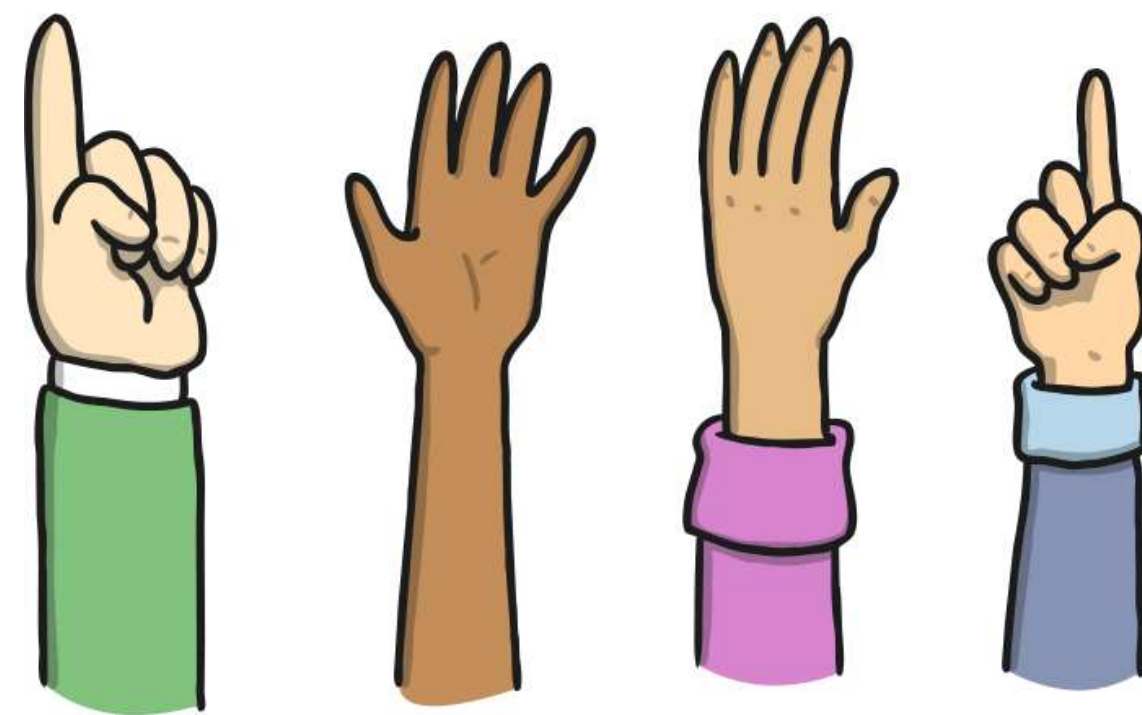
8.50am	Go into your classroom and register
9.20-9.40am	Classroom learning
9.40-10.50am	Snack & garden
10.50-11.00am	Tidy up time
11.00-11.30am	Classroom learning
11.30-11.45am	Story / song time

Reception – My School Afternoon

11.45-12.45pm	Lunch & playtime
12.45-1.05pm	Classroom learning
1.05-2.40pm	Snack & garden
2.40-3.15pm	Assembly / wind-down time
3.15pm	Home-time: pick up in the garden

Reception - My School Morning

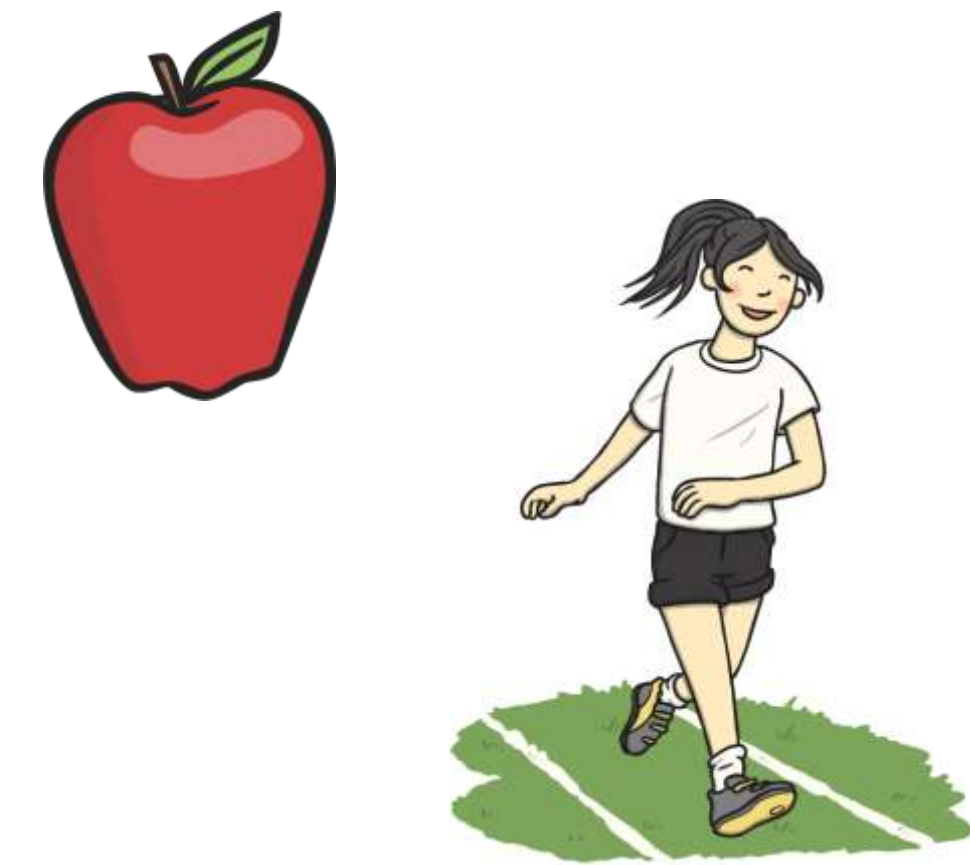
8.50
Go in and Register



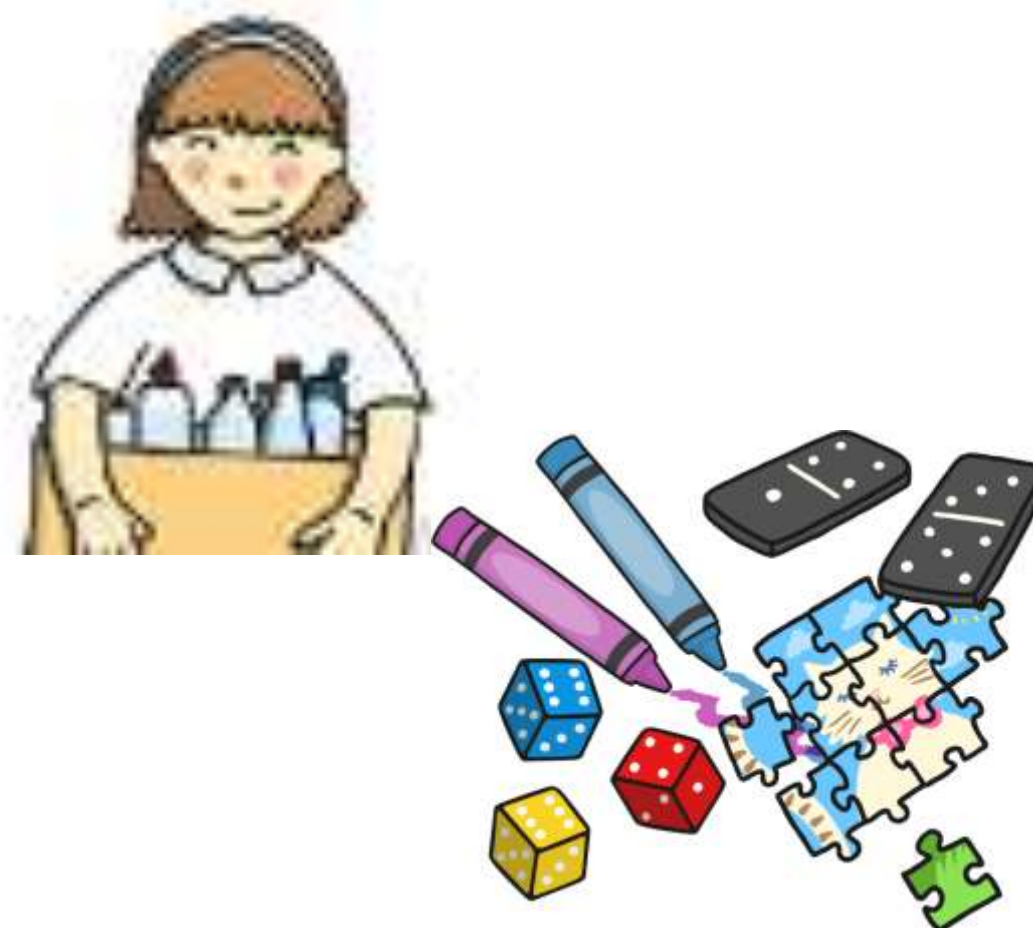
9.20-9.40
Classroom Learning



9.40-10.50
Snack and Garden



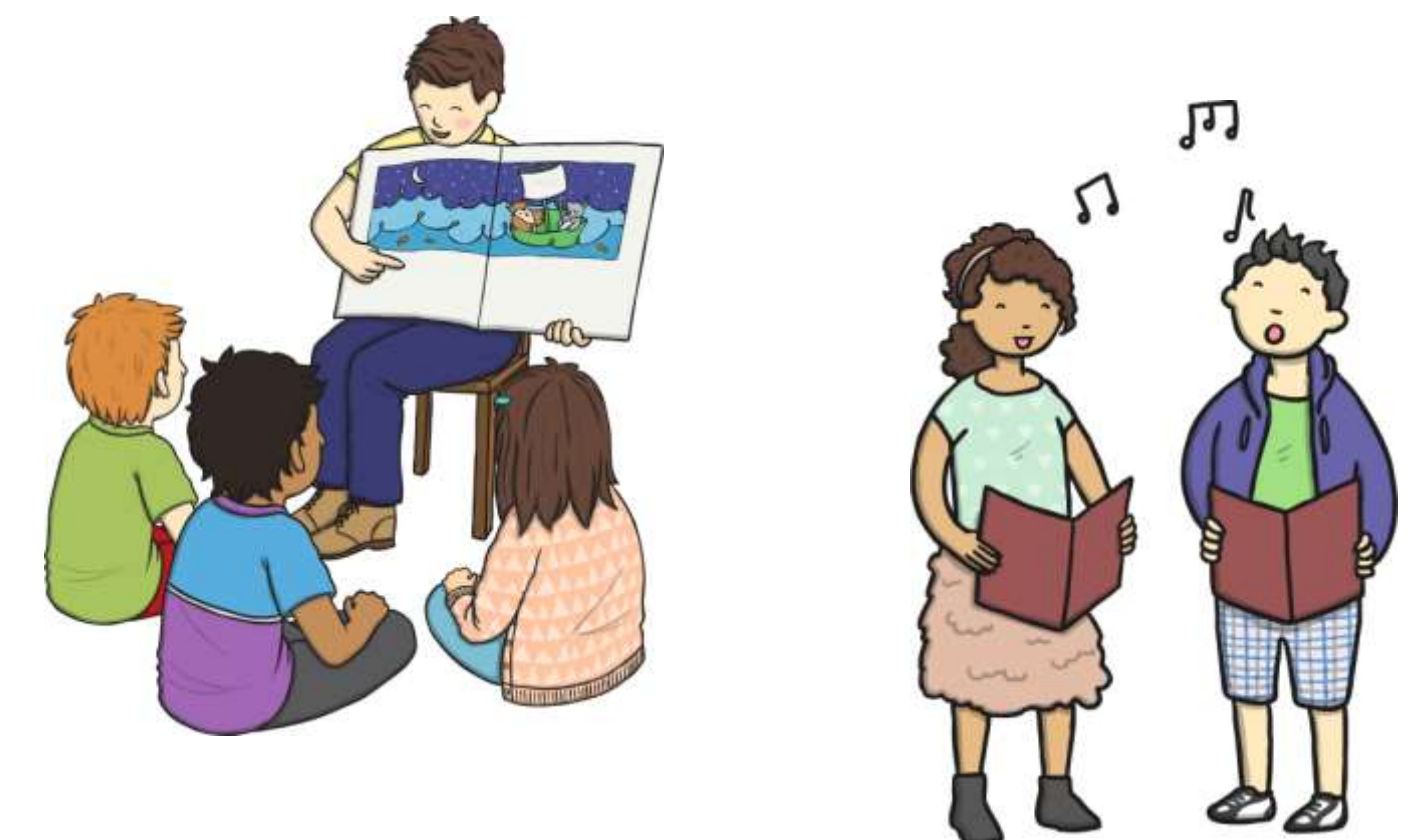
10.50-11.00
Tidy Up



11.00-11.30
Classroom Learning



11.30-11.45
Story / Song



Reception - My School Afternoon

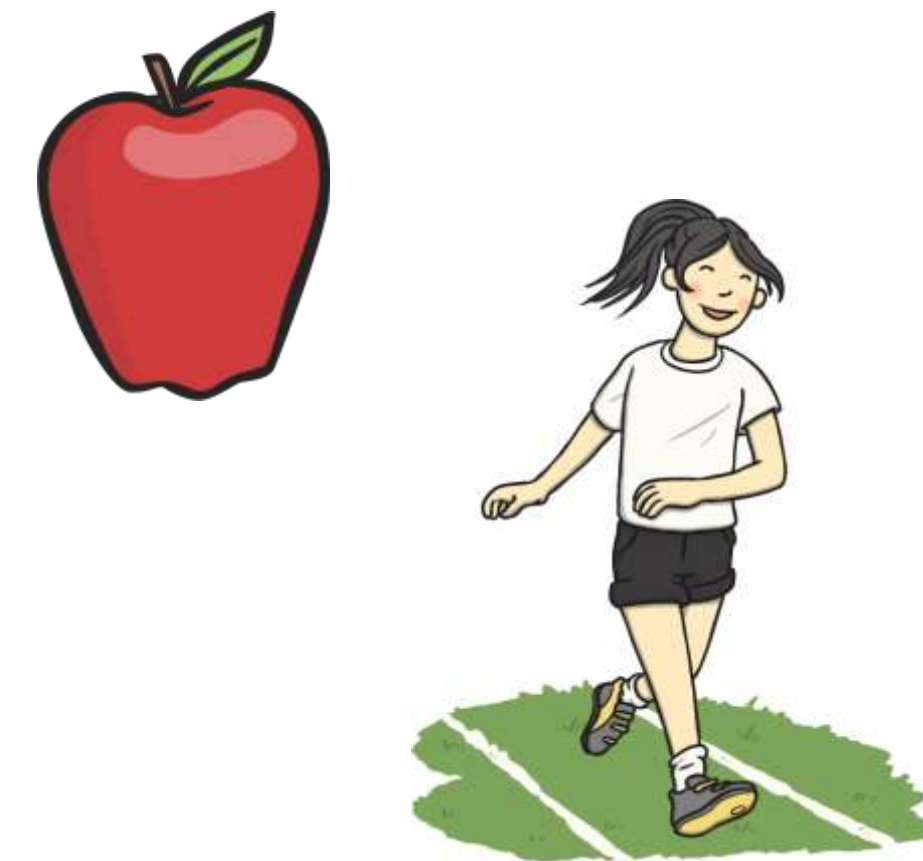
11.45-12.45
Lunch & Playtime



12.45-1.05
Classroom Learning



1.05-2.40
Snack and Garden



2.40-3.15
Assembly /
Wind Down Time



3.15
Home Time



Break Time and Lunch Time

At breaktime and lunchtime you will play in the Apple Tree Garden with your friends. There are always adults there to look after you.





Around the School

The Hall



We use the hall for many things including:

- Eating our lunch every day
- School assemblies
- Indoor sports
- Performances

The Thrive Room



The Thrive Room is a calm and welcoming area that provides a place to relax through playing with toys, reading books, creativity and crafting or just some quiet time resting on the cushions.

The Library

We go to the library to borrow books, read to ourselves, read together and share stories.



Where to find other adults



The Blue Corridor



Mrs. Jayne's Office



Mrs. Buckley and Mrs.
Stephen's office



The Staff Room

There are always lots of caring adults around and you can ask anyone to help you whenever you need to. However, sometimes you might want to find a specific adult - perhaps to show them something you are really proud of, or because your teacher has asked you to do an important job. You can usually find them in or near their offices, which are all on The Blue Corridor.

The Office and Reception Area

If you or your adult need to ask a general question about the school, lunches, letters or appointments, you will need to ask the friendly and helpful people in the office. This is in the main reception area.





School Uniform

My School Uniform

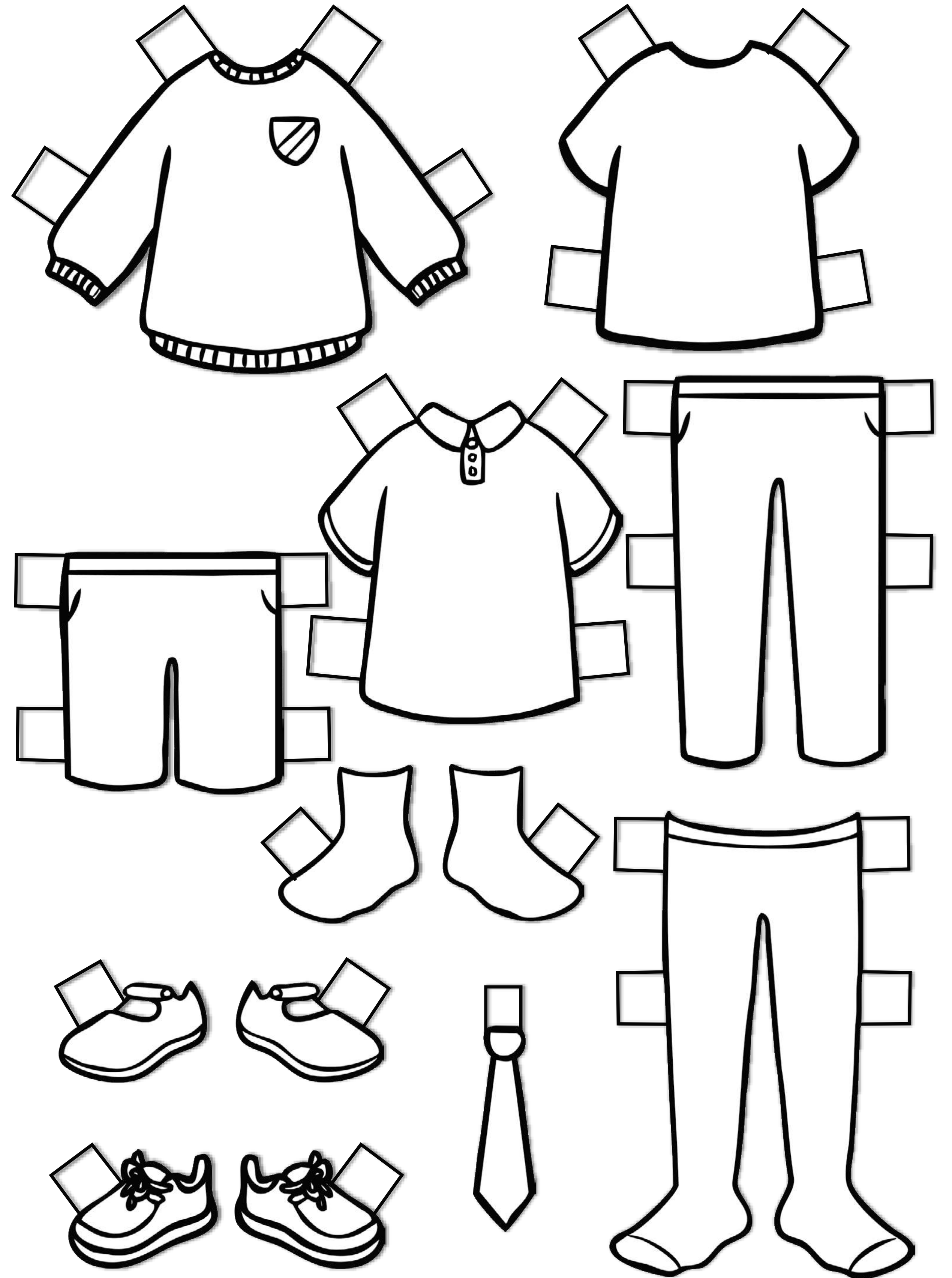
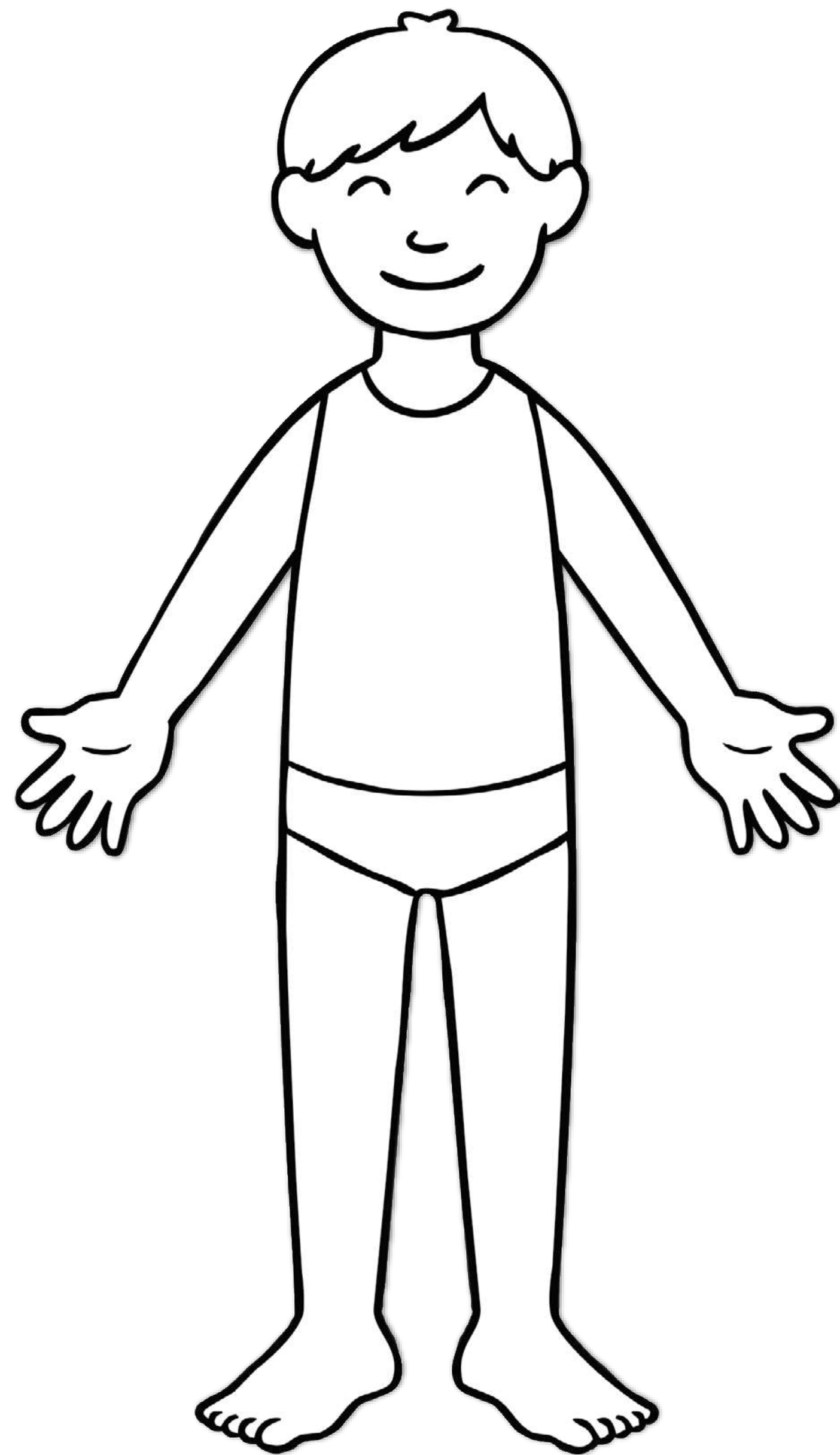
- Grey trousers
- Grey skirt or pinafore dress
- White, grey or black tights or socks
- Pale blue or white polo shirts
- Ocean blue sweatshirt, cardigan or fleece
- Blue and white check summer dress
- Plain black shoes - no heels, flip flops, crocs or trainers
- A book bag or backpack

P.E.

- Navy shorts or tracksuit bottoms
- Plain pale blue or white T-shirt
- Daps or trainers
- A drawstring dap bag to keep your P.E. kit in -hang this on your peg

My School Uniform

It is time for school! Colour the clothes to match our school uniform and then cut them out. Stick them onto the child to help them get dressed for school.



My School Uniform

It is time for school! Colour the clothes to match our school uniform and then cut them out. Stick them onto the child to help them get dressed for school.

