



WELCOME TO KEY STAGE 2 (YEARS 3-6)

Witamy

வரவேற்பு

Benvenuti

Üdvözöljük

Willkommen

Bi xêr hatî

خوش آمدی

Hoşgeldiniz

أهلا بك

Bine ati venit

欢迎

Bem-vinda

I mirëpritur

歡迎

Bienvenidos

Vitajte

Chào mừng

Velkommen

καλώς ΗΡΘΑΤΕ

स्वागत हे

Bienvenue

어서 오십시오

Soo dhawow

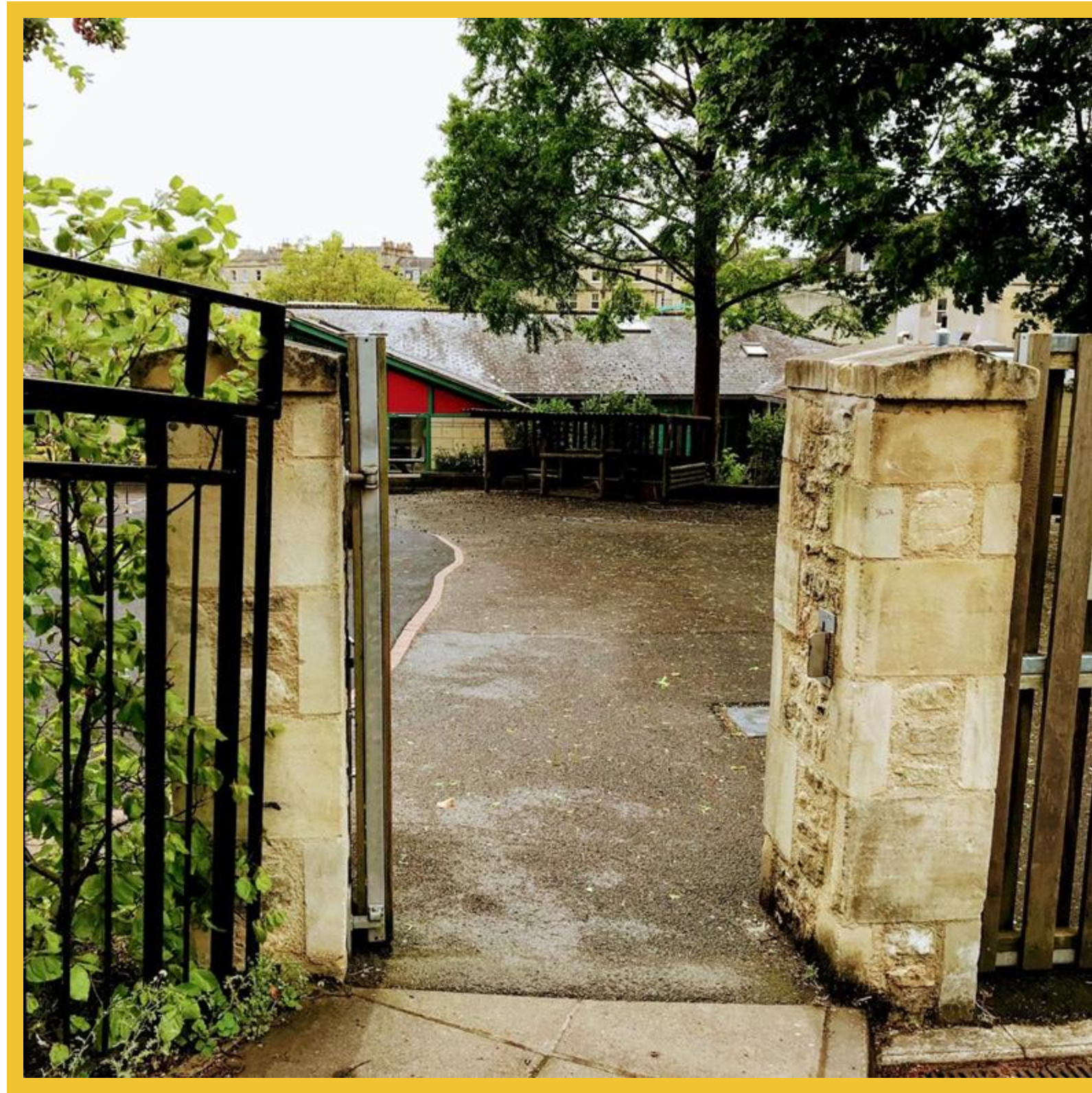
Welcome

Tubasanyukidde



The School Day

Arriving at School



When you get to school in the morning, you and your adult will go through the main gate to the Upper Playground. You can play until 8.50 and then it is time to say goodbye to your adult and line-up with your friends (years 3 to 6 line up along the centre line). Here, you will meet your teacher and they will take you to your classroom to start your school day.

Key Stage 2 - Your School Day

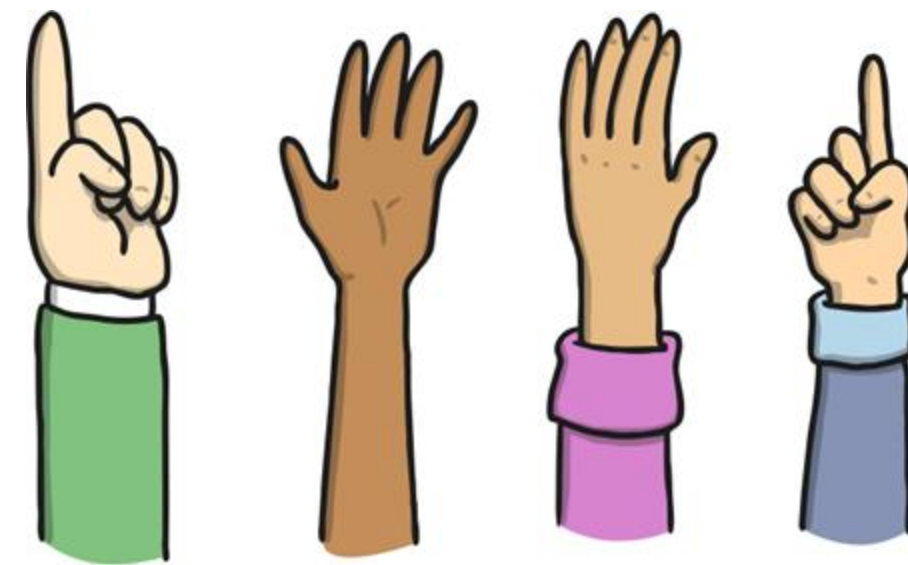
8.50am	School starts: line-up to meet your teacher in the playground
9.00am	Register
9.00-10.45am	Learning
10.45-11.00am	Playtime & healthy snack
11.00-12.15pm	Learning
12.15-1.15pm	Lunchtime (packed lunch or school dinner) & playtime
1.15-3.15pm	Learning / Assembly
3.20pm	Home-time: pick up in the playground

Key Stage 2 - Your School Day

8.50 - Line-Up



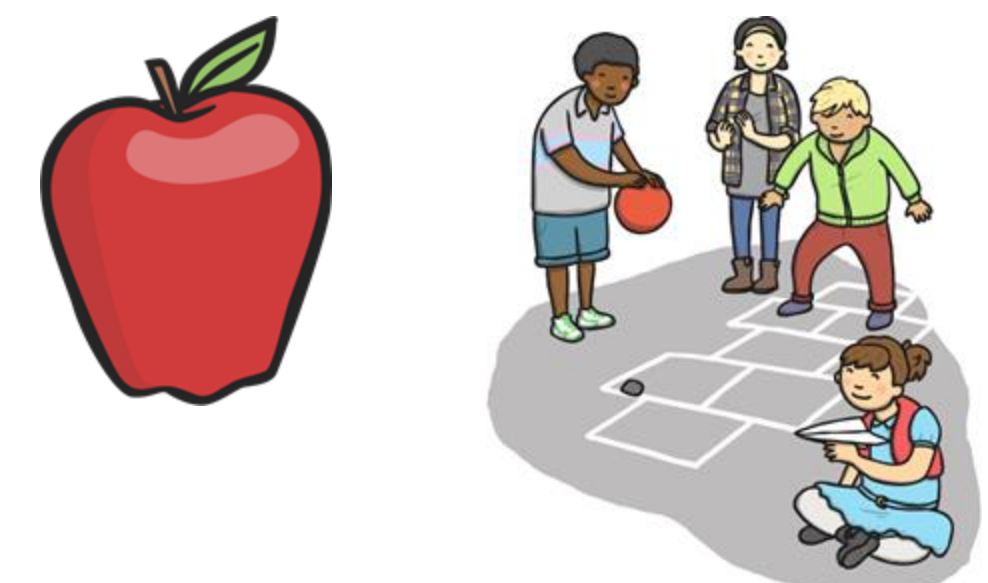
9.00 - Register



9-10.45 - Learning



**10.45-11.00
-Break & Snack**



**11.00-12.15
- Learning**



**12.15-1.15
- Lunch & Break**



**1.15-3.15
- Learning /
Assembly**



3.20 - Home Time



Break Time and Lunch Time

At breaktime and lunchtime you will play on the Upper Playground with your friends. There are always adults there to look after you.





Classrooms

Classrooms – What You Will See

Although classrooms are all different shapes and look slightly different, they all have these:

A screen for your teacher to show you your learning.



A learning tree to show Learning Leaves that have been awarded for special progress in learning and Golden Leaves that are awarded for being thoughtful and kind.

A sink for hand-washing and drinking water.



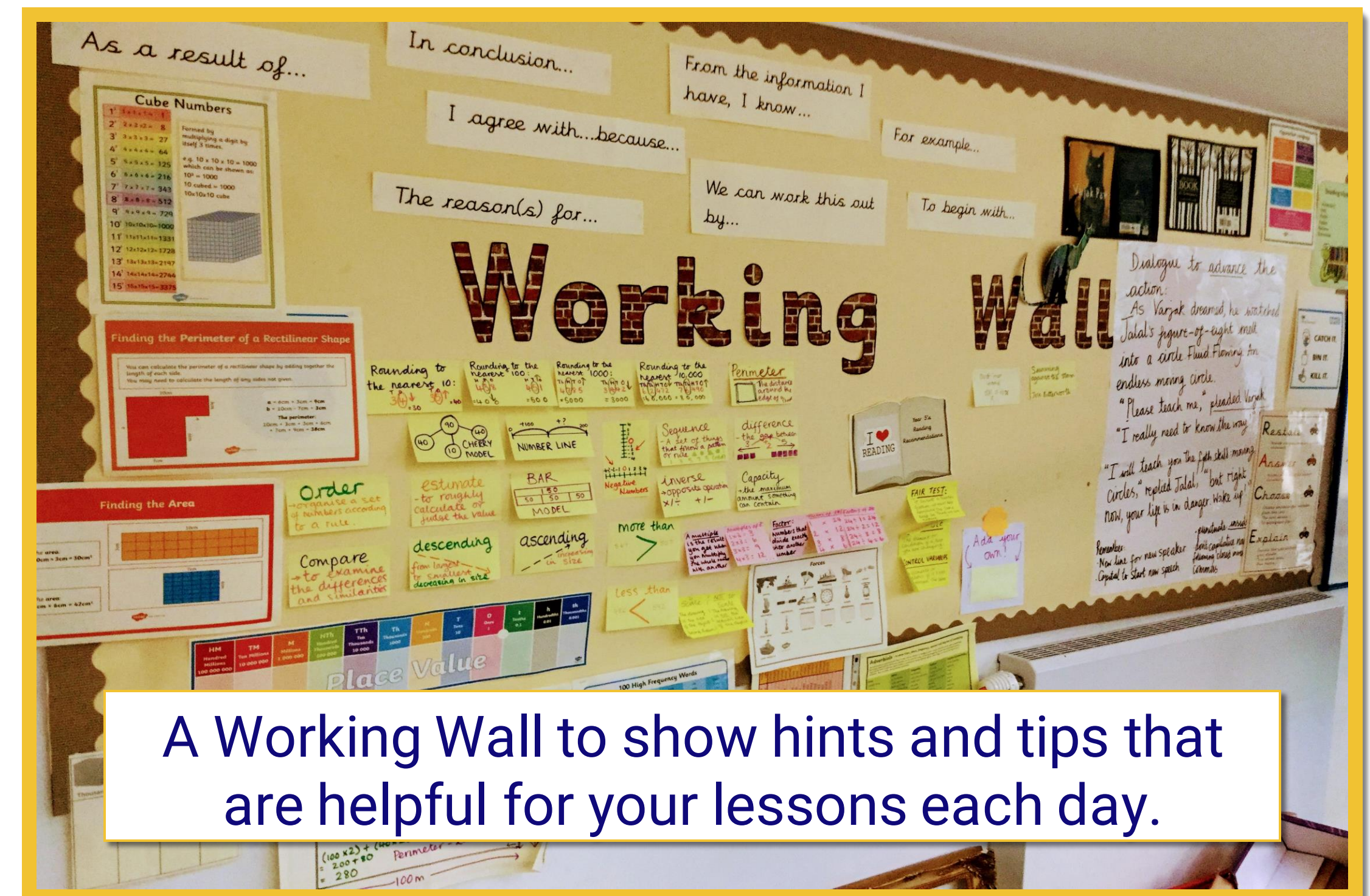
Classrooms – What You Will See

A Topic Wall to show the topic you are learning about each term.



Drawers to keep your things in.

Tables to work at.

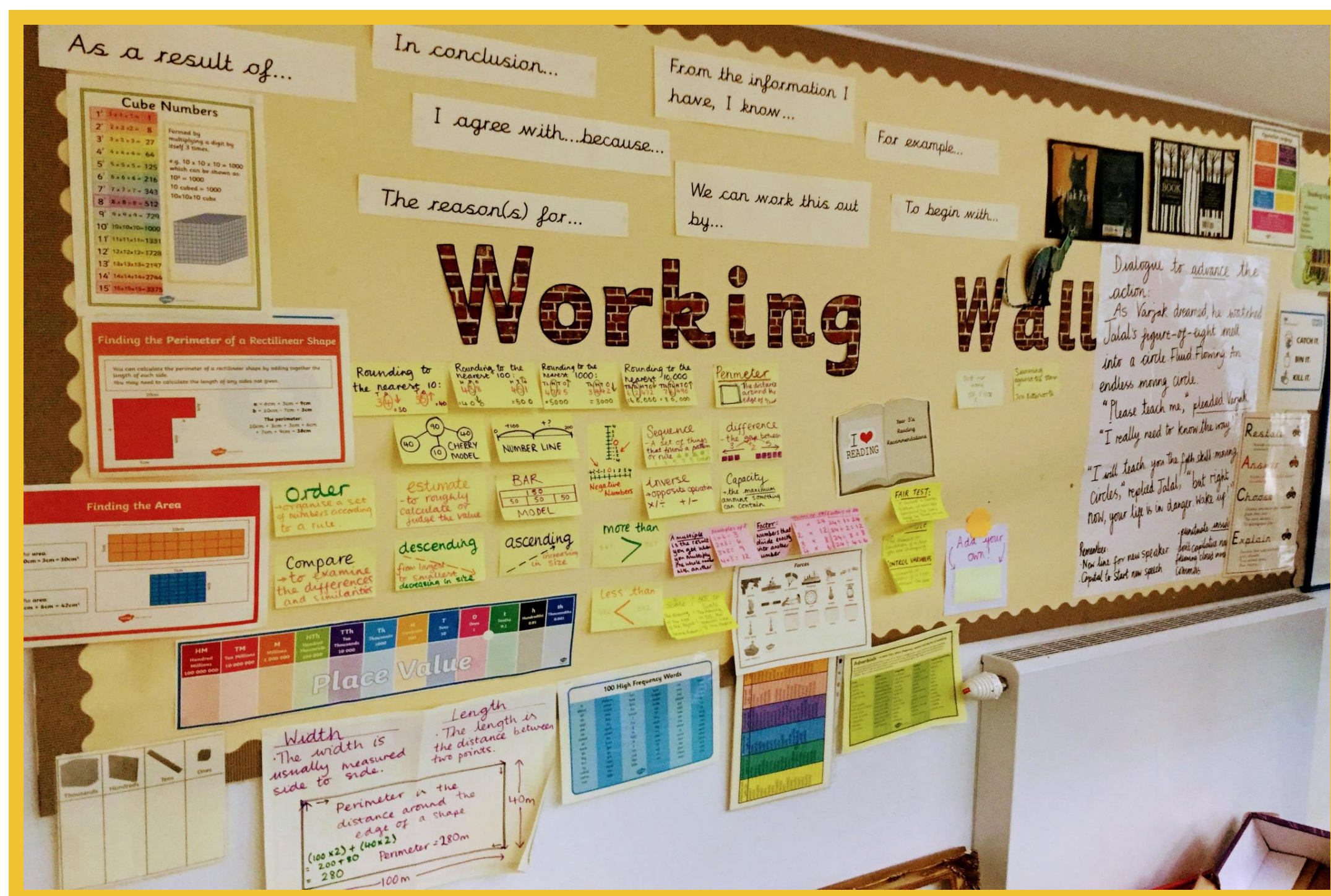


A Working Wall to show hints and tips that are helpful for your lessons each day.



Pegs to hang your coats and bags on.

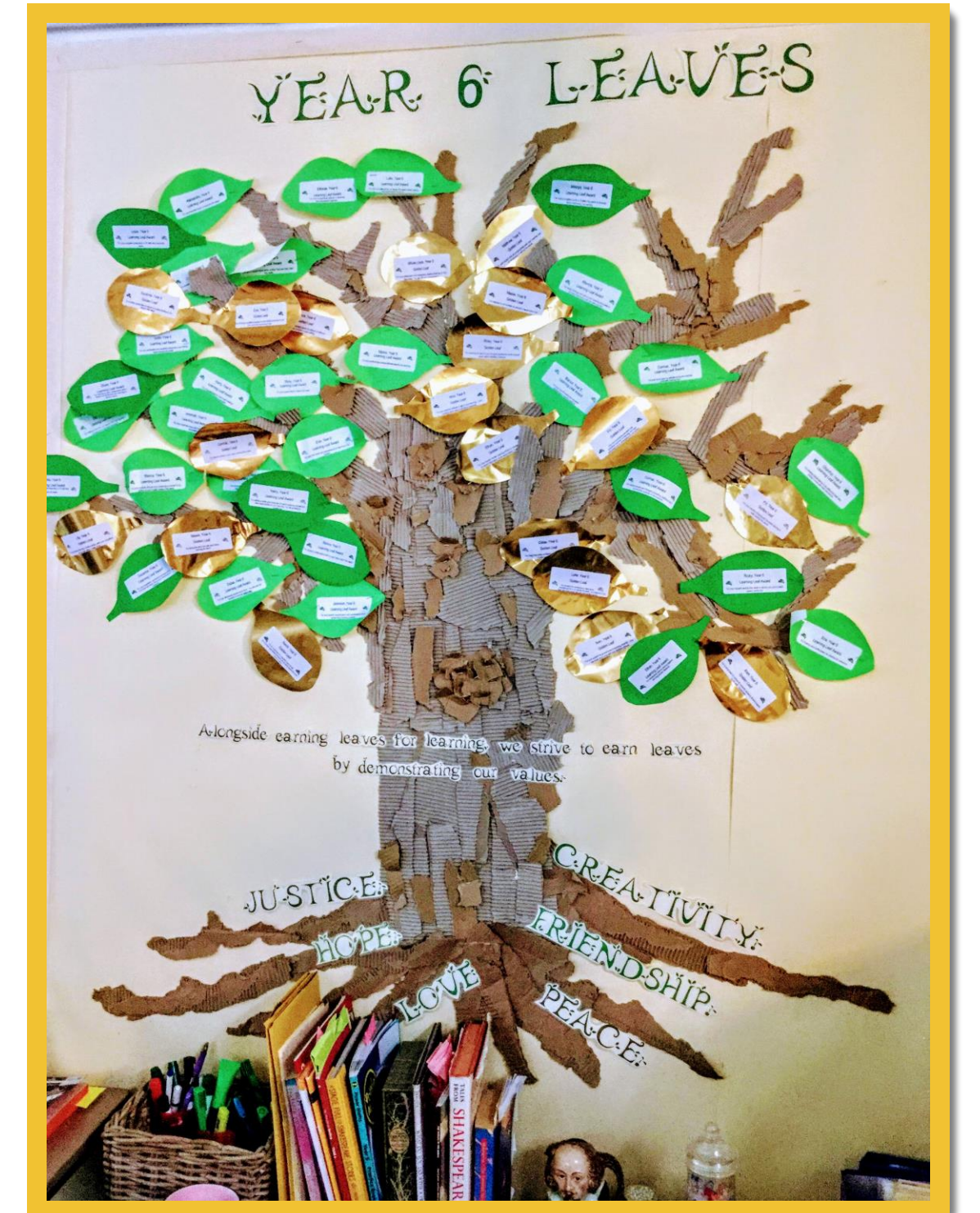
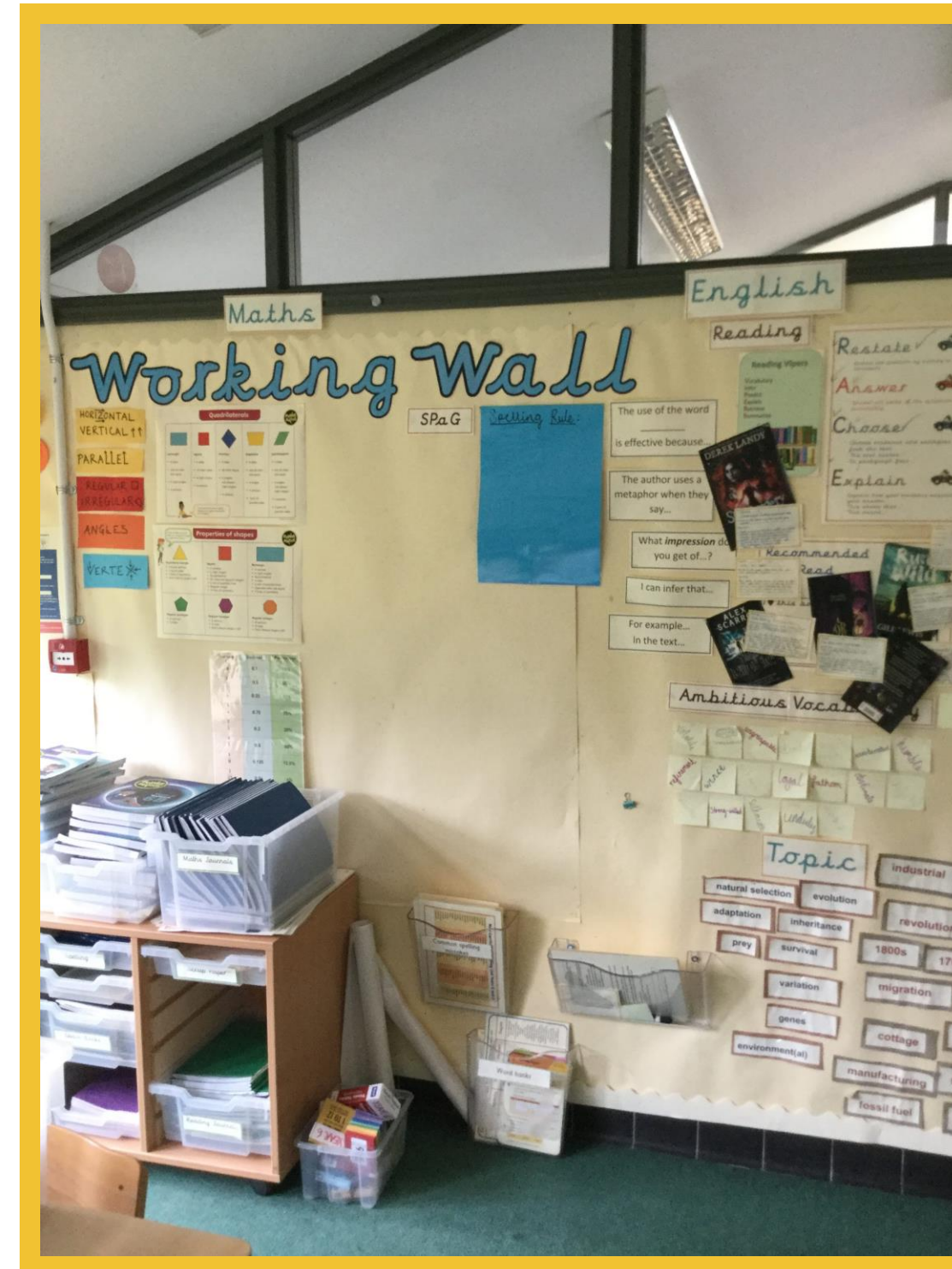
Year 3 Classroom



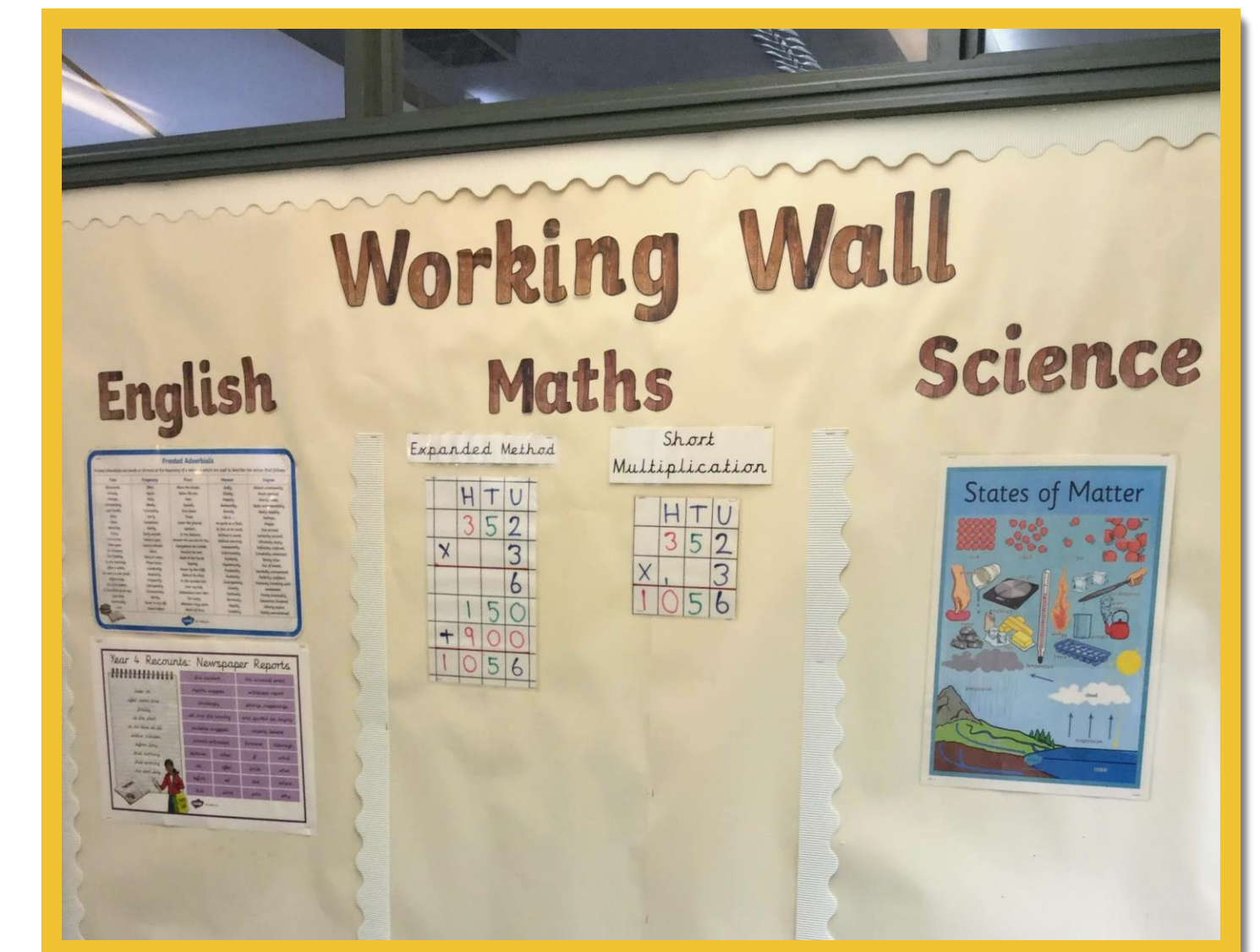
Year 4 Classroom



Year 5 Classroom



Year 6 Classroom





Around the School

The Hall



We use the hall for many things including:

- Eating our lunch every day
- School assemblies
- Indoor sports
- Performances

The Thrive Room



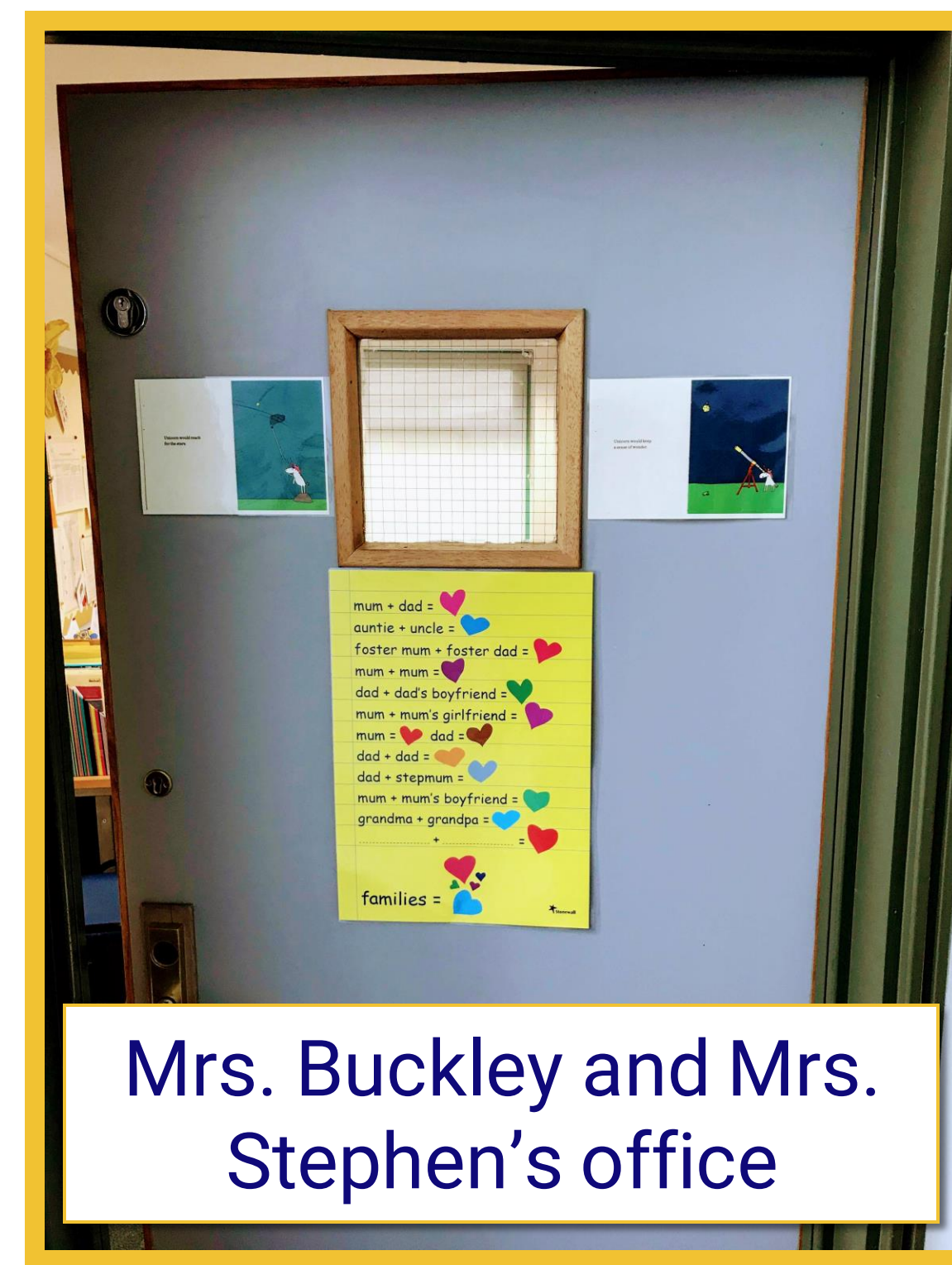
The Thrive Room is a calm and welcoming area that provides a place to relax through playing with toys, reading books, creativity and crafting or just some quiet time resting on the cushions.

The Library

We go to the library to borrow books, read to ourselves, read together and share stories.



Where to Find Other Adults



There are always lots of caring adults around and you can ask anyone to help you whenever you need to. However, sometimes you might want to find a specific adult - perhaps to show them something you are really proud of, or because your teacher has asked you to do an important job. You can usually find them in or near their offices, which are all on The Blue Corridor.

The Office and Reception Area

If you or your adult need to ask a general question about the school, lunches, letters or appointments, you will need to ask the friendly and helpful people in the office. This is in the main reception area.





School Uniform

Your School Uniform

- Grey trousers
- Grey skirt or pinafore dress
- White, grey or black tights or socks
- Pale blue or white polo shirts
- Ocean blue sweatshirt, cardigan or fleece
- Blue and white check summer dress
- Plain black shoes - no heels, flip flops, crocs or trainers
- A book bag or backpack

P.E.

- Navy shorts or tracksuit bottoms
- Plain pale blue or white T-shirt
- Daps or trainers
- A drawstring dap bag to keep your P.E. kit in -hang this on your peg